



Islands  
Medical  
Assistance  
Society

I M A S

ISLANDS MEDICAL ASSISTANCE  
SOCIETY

# ***IMAS 2023-2024-2025 GOAL***

## ***NEW MAMMOGRAPHY MACHINE***

For Breast Cancer Screening at the Health Center in Mali Losinj

## ***PORTABLE ULTRASOUND***

For the Emergency Services in Mali Losinj

## ***PUBLIC DEFIBRILATOR***

For Valun

**SINCE 2002 I.M.A.S.  
DONATED  
THROUGH YOUR  
SUPPORT OVER  
\$550,000**

**FOLOWING ARE  
ITEMS DELIVERED  
THROUGH YOUR  
DONATIONS SINCE  
2002**

# DONATIONS 2022

**YEAR 2022**

***DONATION TO “DINKO KOZULIC”  
MEDICAL CENTER MALI LOSINJ***

**BLOOD ANALYZER**



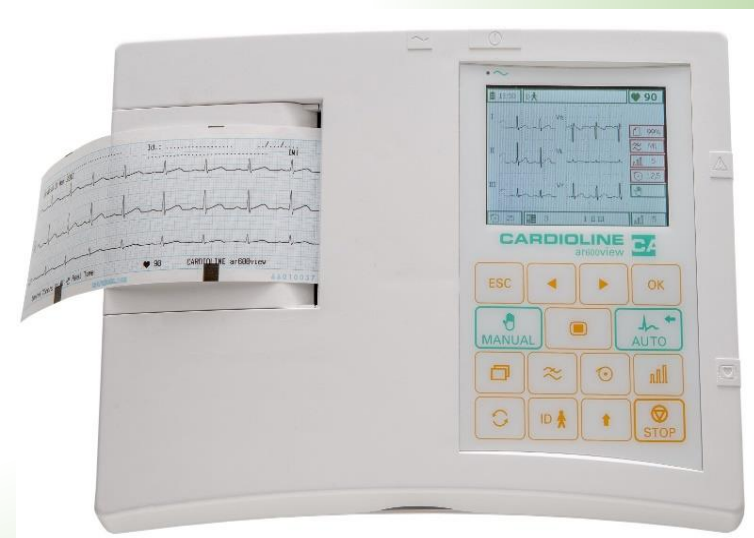
**YEAR 2022**

***DONATION TO REHABILITATION  
CLINIC "LJECILISTE" VELI LOSINJ***

**DEFIBRILATOR**



**EKG MACHINE**



**YEAR 2022**

# ***DONATION TO CRES EMERGENCY SERVICES***



OXYGEN  
TANK



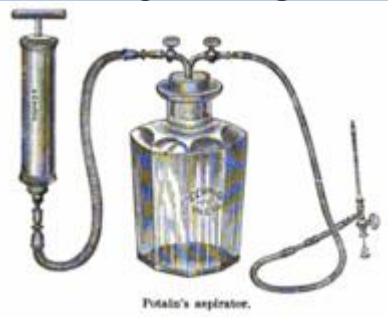
VENTILATOR KIT



BLOOD PRESSURE GAUGE



STERILIZER AUTOCLAVE



ASPIRATOR



AMPULE CASE



LARYNGOSCOPE



MEDICAL BACKPACK



**YEAR 2022**

***DONATION TO  
CRES OUTPATIENT CLINIC***

**AUTOCLAVE STERILIZER**



# DONATIONS 2021

**YEAR 2021**

***DONATION TO "DINKO KOZULIC"  
MEDICAL CENTER MALI LOSINJ***



Autoclave Sterilizer

**YEAR 2021**

***DONATION TO REHABILITATION CLINIC  
“LJECILISTE” VELI LOSINJ***

Asthma Nitric Oxide monitor



Myocardial Infarction Tests Kits



Pulsoximeter (2)



10  
Breathing  
Trainers

2  
Respiratory  
Muscles  
Exerciser



***YEAR 2021***

**VELI LOSINJSENIOR CARE FACILITY  
“MARCO A, STUPARIC”**



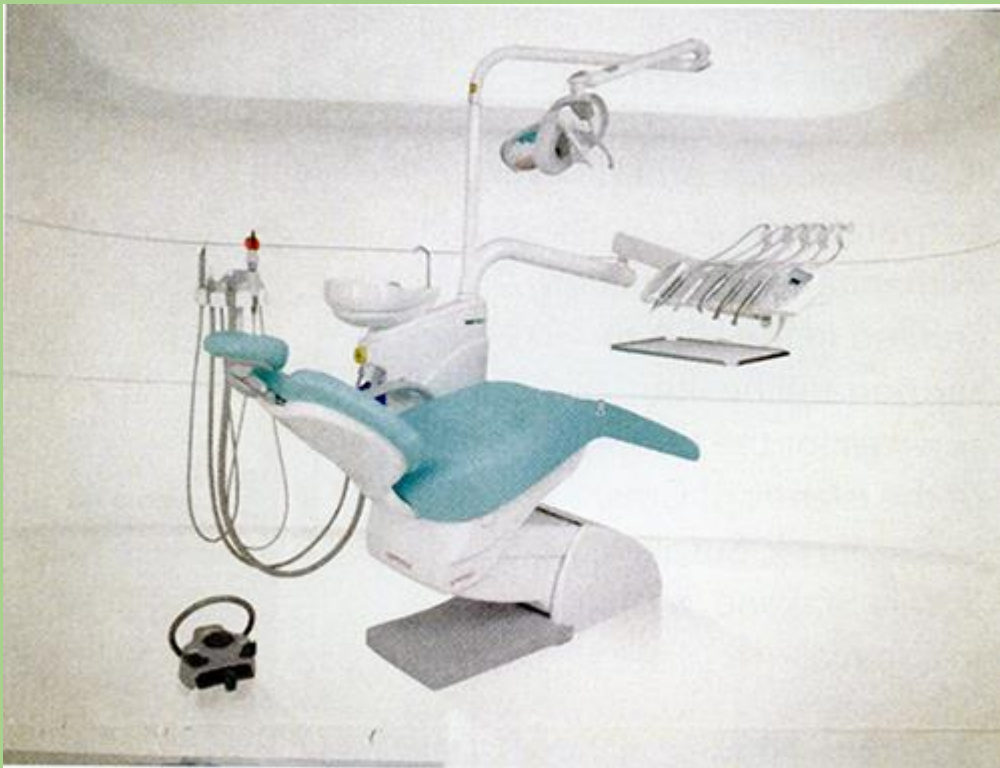
**SOCK AIDES (15)**

# DONATIONS 2020

**YEAR 2020**

***DONATION TO "DINKO KOZULIC"  
MEDICAL CENTER MALI LOSINJ***

Dental Chair



Dialysis Bed with scale



# DONATIONS 2019



**YEAR 2019**

***DONATION TO "DINKO KOZULIC"  
MEDICAL CENTER MALI LOSINJ***

**DISINFECTING SYSTEM (2)**

**MICROSCOPE**



**YEAR 2019**

***DONATION TO  
SUSAK OUTPATIENT CLINIC***

**LOWER TOWN PUBLIC  
USE DEFIBRILATOR**



**UPPER TOWN PUBLIC  
USE DEFIBRILATOR**



# DONATIONS 2018

**YEAR 2018**

***DONATION TO "DINKO KOZULIC"  
MEDICAL CENTER MALI LOSINJ***

**ULTRASOUND MACHINE FOR CARDIOLOGY**

**DENTAL X-RAY FILM PROCESSOR**



**YEAR 2018**

***DONATION TO CRES  
EMERGENCY SERVICES***

**Puloximeter**



**Medical Supplies**

**Wheelchair**



**Blood Pressure Cuff**



# DONATIONS 2017

**YEAR 2017**

***DONATION TO "DINKO KOZULIC"  
MEDICAL CENTER MALI LOSINJ***

**MEDICATION CART**



**CLEANING CART**



**YEAR 2017**

***DONATION TO "DINKO KOZULIC"  
MEDICAL CENTER MALI LOSINJ***

Commodes (2)



Patient Night Stand & Overbed Tables (6)





**YEAR 2017**

***DONATION TO "DINKO KOZULIC"  
MEDICAL CENTER MALI LOSINJ***

**SURGERY TABLE**



**ELECTRIC THERAPY**



**YEAR 2017**

***DONATION TO "DINKO KOZULIC"  
MEDICAL CENTER MALI LOSINJ***

**SURGERY LAMP**



**PATIENT ELECTRICAL BED (2)**



**YEAR 2017**

***DONATION TO CRES  
EMERGENCY SERVICES***

**AUTOMATIC CPR UNIT**



**YEAR 2017**

# DONATION TO BELEJ OUTPATIENT CLINIC

**ELECTROCARDIAM MACHINE  
(EKG)**



# DONATIONS 2016

**YEAR 2016**

***DONATION TO "DINKO KOZULIC"  
MEDICAL CENTER MALI LOSINJ***

**6 PUBLIC DEFIBRILLATORS**

**DESIGNATED LOCATIONS:**



**YEAR 2016**

***DONATION TO "DINKO KOZULIC"  
MEDICAL CENTER MALI LOSINJ***

**TRANSPORT STRETCHER**



**RADIOLOGY PRINTER**



**YEAR 2016**

***DONATION TO  
CITY OF MALI LOSINJ  
DENTURE MOLD MACHINE***





**YEAR 2016**

***DONATION TO CRES  
EMERGENCY SERVICES***

**EXAM TABLE**



**YEAR 2016**

# DONATION TO CRES OUTPATIENT CLINIC

PUBLIC USE DEFIBRILATOR



**YEAR 2016**

# MARTINSCICA OUTPATIENT CLINIC

**STRETCHER**



**SYRINGE**



# DONATIONS 2015

**YEAR 2015**

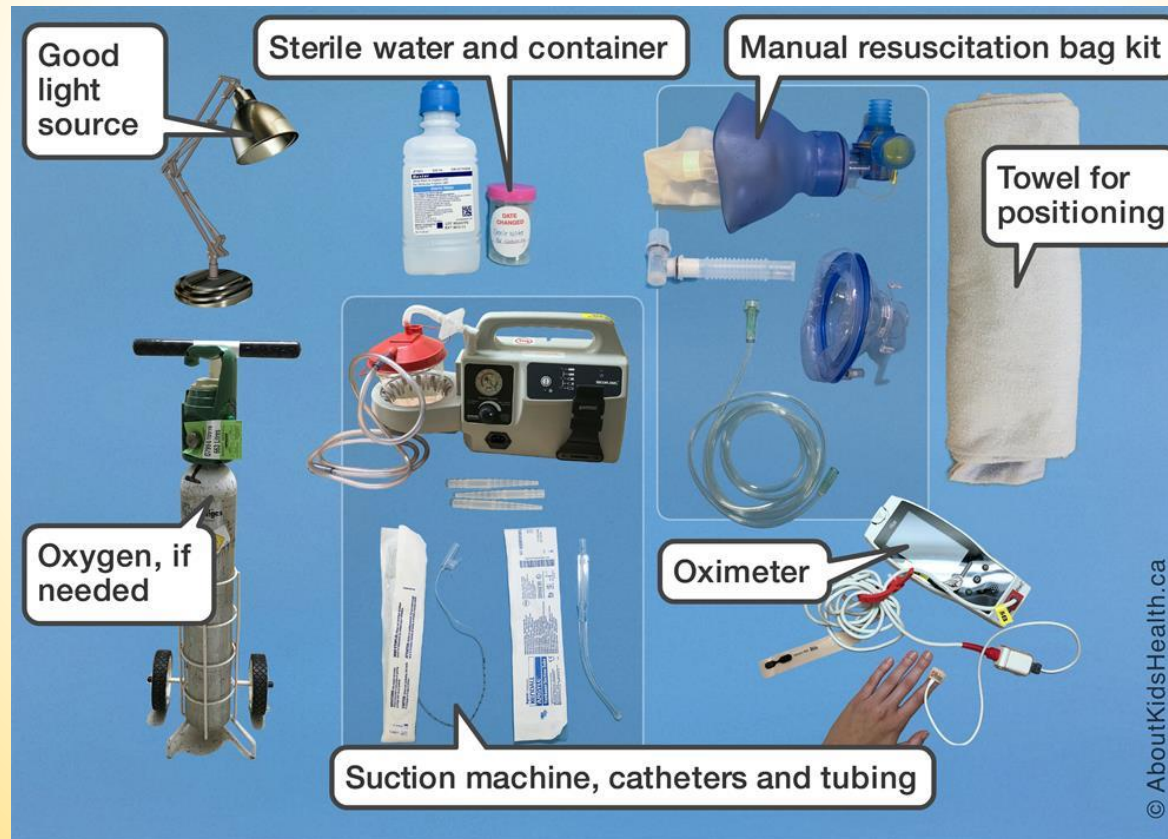
***DONATION TO "DINKO KOZULIC"  
MEDICAL CENTER MALI LOSINJ***

**DEFIBRILATOR/ELECTRO  
CARDIAC MACHINE (EKG)**



**YEAR 2015**

# **DONATION TO MALI LOSINJ EMERGENCY SERVICES EMS TRACHEOTOMY EQUIPMENT FOR ADULTS/CHILD**



**YEAR 2015**

# DONATION TO CRES EMERGENCY SERVICES

## BLOOD PRESSURE CUFFS (3)



## DEFIBRILATOR/EKG



***YEAR 2015***

# **DONATION TO CRES EMERGENCY SERVICES**

**PEDIATRIC TRAUMA PACK**

**BAG FOR DRUG AMPULES**





***YEAR 2015***

# **DONATION TO CRES EMERGENCY SERVICES**

**STETOSCOP**



**OTOSCOPE**



**YEAR 2015**

# DONATION TO CRES EMERGENCY SERVICES

**PULSOXIMETER**



**THERMOMETER**



**YEAR 2015**

# DONATION TO ILOVIK OUTPATIENT CLINIC

**DEFIBRILATOR**



**GLUCOMETER**



***YEAR 2015***

# DONATION TO ILOVIK OUTPATIENT CLINIC

**PULSE OXIMETER**



***YEAR 2015***

# **DONATION TO ILOVIK OUTPATIENT CLINIC**

**OXYGEN BOTTLE**



**OXYGEN MASK**



**YEAR 2015**

# DONATION TO ILOVIK OUTPATIENT CLINIC

**EPIPEN**

**LARYNGOSCOPE**



***YEAR 2015***

**DONATION TO  
ILOVIK OUTPATIENT CLINIC  
AMBULANCE BAG**



**MEDICAL SUPPLIES  
BETADIN  
ALCHOHOL  
STERILE PADS  
TAPES  
SALINE BOTTLES**

# DONATIONS 2014



**YEAR 2014**

# DONATION TO MALI LOSINJ EMERGENCY SERVICES

**PULS OXIMETER (4)**



***YEAR 2014***

# **DONATION TO MALI LOSINJ EMERGENCY SERVICES**

**PEDIATRIC  
BLOOD PRESSURE CUFF**

**2 EXAM TABLES**



# DONATIONS 2013

**YEAR 2013**

***DONATION TO "DINKO KOZULIC"  
MEDICAL CENTER MALI LOSINJ***

**GRASS TRIMMER**



**ELECTROCARDIAM (EKG) CART**



**YEAR 2013**

***DONATION TO "DINKO KOZULIC"  
MEDICAL CENTER MALI LOSINJ***

**MAINTENANCE WORKBENCH**

**MAINTENANCE HAND TOOLS**



**YEAR 2013**

***DONATION TO "DINKO KOZULIC"***

***MEDICAL CENTER MALI LOSINJ***

**WHEELCHAIR**

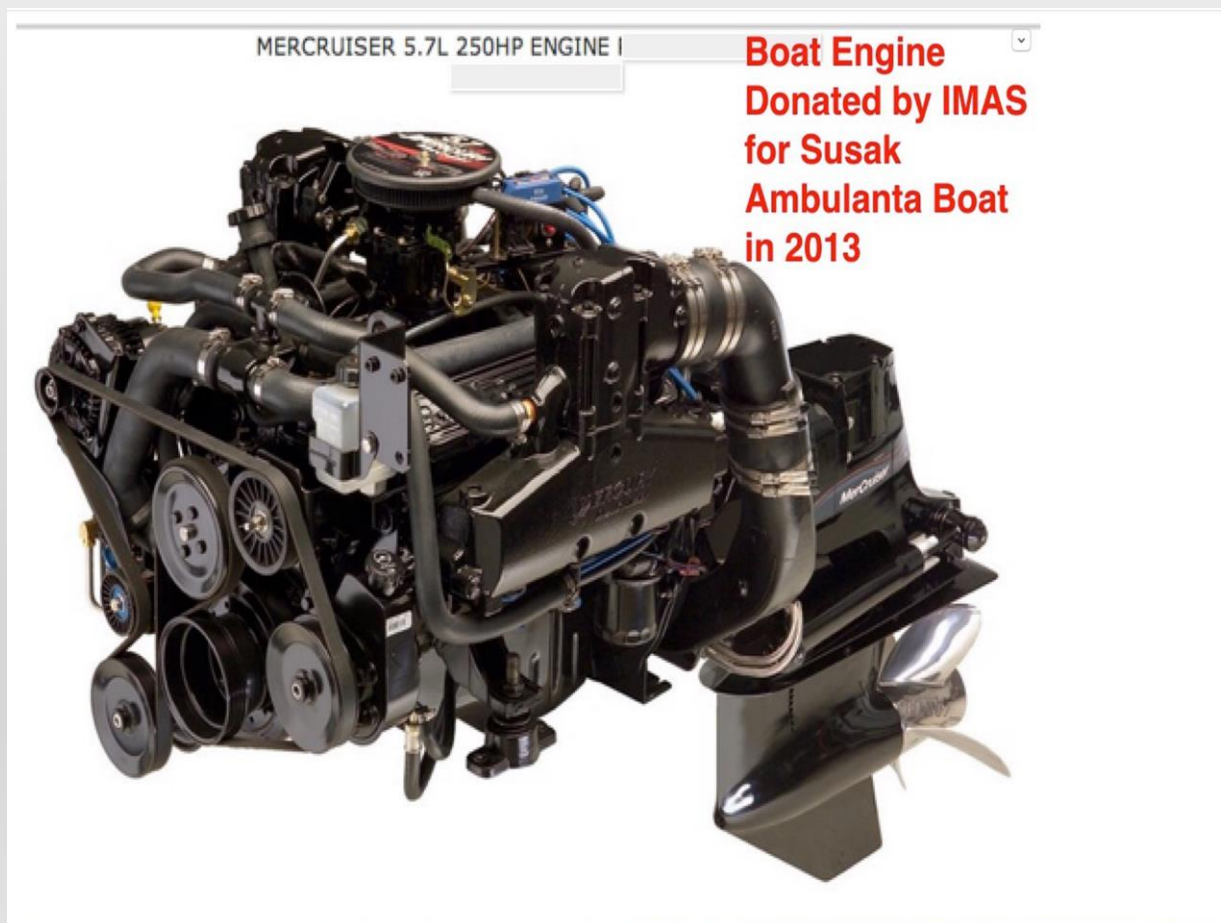
**MEDICATION CART**



**YEAR 2013**

# **DONATION TO SUSAK FIRE DEPARTMENT**

## **ENGINE FOR SUSAK FIRE DEPARTMENT**



***YEAR 2013***

# **DONATION TO SUSAK FIRE DEPARTMENT**

## **ENGINE FOR SUSAK FIRE DEPARTMENT**





# DONATIONS 2012

**YEAR 2012**

***DONATION TO "DINKO KOZULIC"***  
***MEDICAL CENTER MALI LOSINJ***  
**COMPUTERIZED ERGOMETRIC STRESS TEST WITH TREADMILL**



**YEAR 2012**

***DONATION TO "DINKO KOZULIC"***

***MEDICAL CENTER MALI LOSINJ***

**ELECTRICAL BEDS (4)**

**ULTRASOUND HEAD**

**HOLTER MONITOR**



**YEAR 2012**

# DONATION TO BELEJ OUTPATIENT CLINIC

**FIRST AID WALL CABINET**



***YEAR 2012***

**DONATION TO  
CUNSKI OUTPATIENT CLINIC  
OXYGEN TANK**



# DONATIONS 2011

**YEAR 2011**

***DONATION TO "DINKO KOZULIC"  
MEDICAL CENTER MALI LOSINJ***

**ELECTRIC BEDS ELECTRIC BEDS  
AND MATTRESSES (6)**



**ZOLL DEFIBRILLATOR**



**YEAR 2011**

***DONATION TO "DINKO KOZULIC"  
MEDICAL CENTER MALI LOSINJ***

**ELECTROCARDIUM MACHINE (EKG)**



Dr's Toy Store



**YEAR 2011**

***DONATION TO  
CRES OUTPATIENT CLINIC***

***EMERGENCY PORTABLE DEFIBRILATOR***



# DONATIONS 2010

***YEAR 2010***

***DONATION TO “DINKO KOZULIC”  
MEDICAL CENTER MALI LOSINJ***

**HOSPITAL OVERBED TABLES**



# DONATIONS 2009

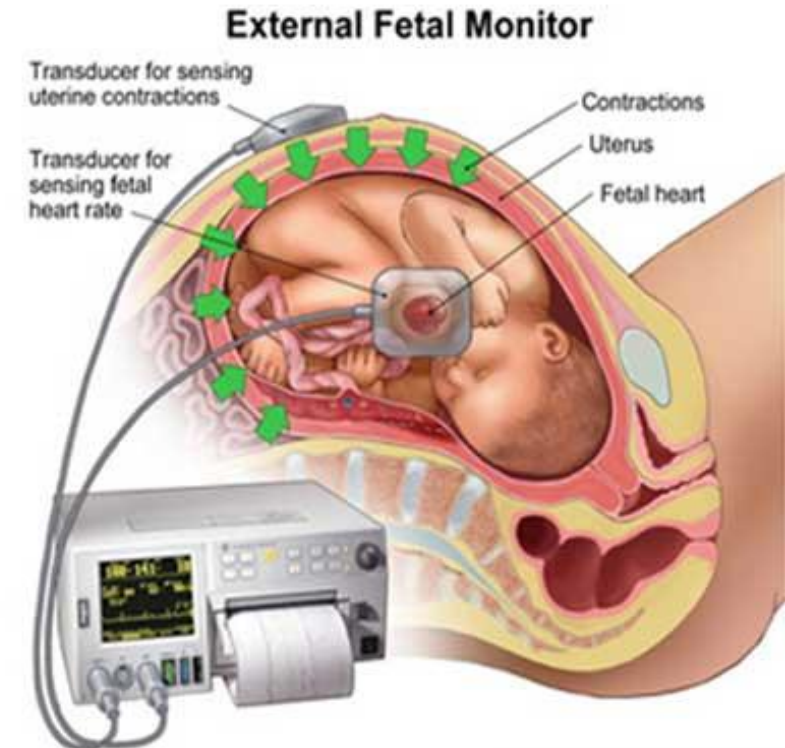
**YEAR 2009**

***DONATION TO "DINKO KOZULIC"  
MEDICAL CENTER MALI LOSINJ***

**EMERGENCY PORTABLE  
RESPIRATOR**



**EXTERNAL FETAL  
MONITOR**



**YEAR 2009**

***DONATION TO "DINKO KOZULIC"  
MEDICAL CENTER MALI LOSINJ***

**PUMP for SPIROMETER**

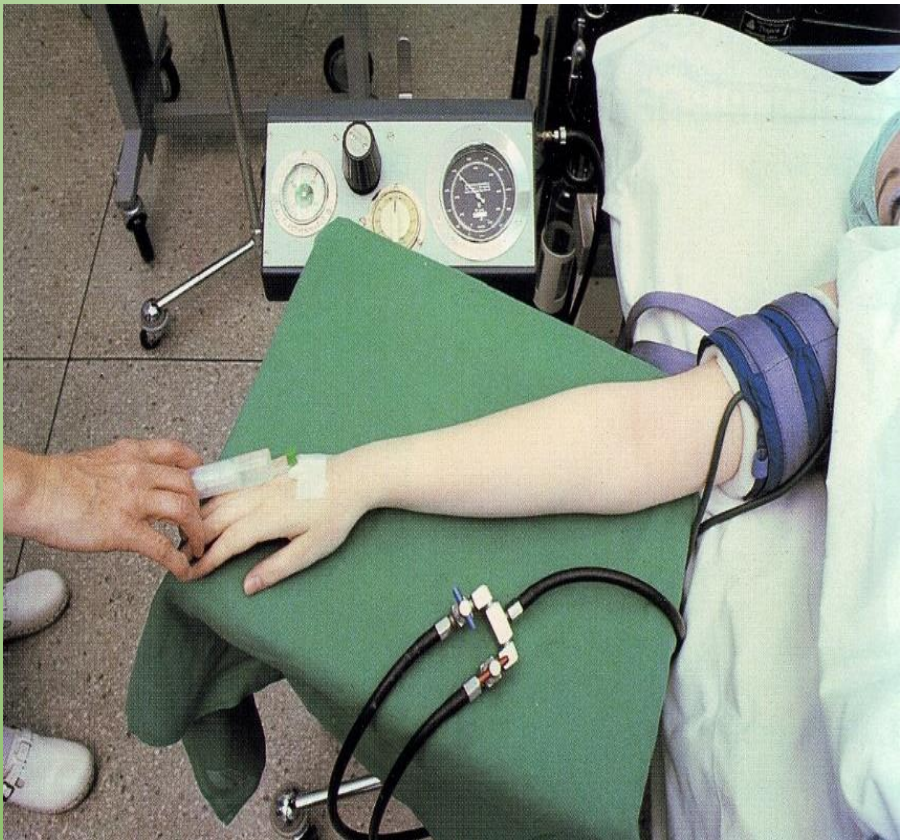
**SPIROMETER**



**YEAR 2009**

***DONATION TO "DINKO KOZULIC"  
MEDICAL CENTER MALI LOSINJ***

**TOURNIQUET SYSTEM for REGIONAL ANESTHESIA      ELECTROCARDIUM MACHINE (2)**



***YEAR 2009***

# DONATION TO CRES OUTPATIENT CLINIC

**CARDIOVIT AT-1 EKG**





**YEAR 2009**

# DONATION TO CRES OUTPATIENT CLINIC

**ELECTROLITE ANALYZER**



**MECHANICAL WEIGHT SCALE**



**DIGITAL WEIGHT SCALE**



***YEAR 2009***

# **DONATION TO CUNSKI OUTPATIENT CLINIC**

**WHEELCHAIR**



**GLUCOSE MONITOR**



***YEAR 2009***

# **DONATION TO CUNSKIOUTPATIENT CLINIC**

**BLOOD PRESSURE GAUGE**



**FIRST AID KIT**



***YEAR 2009***

**DONATION TO MALI LOSINJ SENIOR CARE  
FACILITY “ANGELIKE CASNE SESTRE”  
WHEELCHAIR**



***YEAR 2009***

**DONATION TO VELI LOSINJ SENIOR CARE  
FACILITY “MARCO A STUPARIC”  
WHEELCHAIR**



# DONATIONS 2008

**YEAR 2008**

***DONATION TO "DINKO KOZULIC"  
MEDICAL CENTER MALI LOSINJ***

**HEMODIALYSIS UNIT**



**DIALYSIS WEIGHT SCALE**



# DONATIONS 2007



**YEAR 2007**

***DONATION TO “DINKO KOZULIC”  
MEDICAL CENTER MALI LOSINJ  
ULTRASOUND***



**YEAR 2007**

# DONATION TO CRES OUTPATIENT CLINIC

## CENTRIFUGE BLOOD ANALYZER



***YEAR 2007***

# **DONATION TO SUSAK OUTPATIENT CLINIC**

**DEFIBRILATOR**



***YEAR 2007***

# **DONATION TO VELI LOSINJ OUTPATIENT CLINIC**

**STERILIZER**



**OXYGEN BOTTLE**



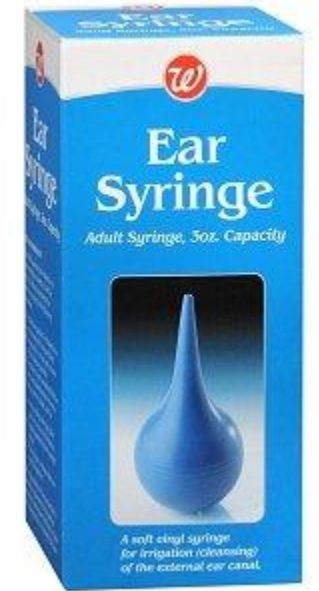
**YEAR 2007**

# DONATION TO BELEJ OUTPATIENT CLINIC

**PRESSURE CUFF**



**FOLDING STRETCHER**



# DONATIONS 2006

**YEAR 2006**

***DONATION TO "DINKO KOZULIC"  
MEDICAL CENTER MALI LOSINJ***



**LAB BIOCHEMISTRY ANALYZER**

**YEAR 2006**

***DONATION TO "DINKO KOZULIC"  
MEDICAL CENTER MALI LOSINJ***

**LAB BLOOD CELL ANALYZER**



**LAB CHEMISTRY ANALYZER**





***YEAR 2006***

# **DONATION TO CRES SENIOR CARE FACILITY**

## **WHEELCHAIR**



**YEAR 2006**

# DONATION TO CRES OUTPATIENT CLINIC

## DEFIBRILATOR- ELECTROCARDIUM MACHINE



## DRY STERILIZER



***YEAR 2006***

# **DONATION TO ILOVIK OUTPATIENT CLINIC**

## **WHEELCHAIR**



**YEAR 2006**

# DONATION TO LJECILISTE VELI LOSINJ



MAGNETOMED 7200

**MAGNETIC THERAPY  
UNIT**

***YEAR 2006***

## **DONATION TO SUSAK OUTPATIENT CLINIC**

**WHEELCHAIR**



***YEAR 2006***

**DONATION TO SUSAK SENIOR  
CARE FACILITY**

**WHEELCHAIR**



**YEAR 2006**

# DONATION TO UNIJE OUTPATIENT CLINIC

**STRETCHER**



**DEFIBRILLATOR**



# DONATIONS 2005



**YEAR 2005**

***DONATION TO "DINKO KOZULIC"  
MEDICAL CENTER MALI LOSINJ***

**PORTABLE EKG (2)**



**DEFIBRILLATOR/ELECTRO  
CARDIAM MACHINE**



***YEAR 2005***

**DONATION TO NEREZINE OUTPATIENT  
CLINIC**

**PORTABLE ELECTROCARDIAM  
MACHINE EKG**



***YEAR 2005***

## **DONATION TO SUSAK OUTPATIENT CLINIC**

**FERNO MULTI-LEVEL STRETCHER**



**EAR SYRINGE**



***YEAR 2005***

**DONATION TO MARTINSCICA  
OUTPATIENT CLINIC**

**PUBLIC USE DEFIBRILATOR**



***YEAR 2005***

## **DONATION TO ILOVIK OUTPATIENT CLINIC**



## **FERNO MULTI-LEVEL STRETCHER**



# DONATIONS 2003

**YEAR 2003**

***DONATION TO "DINKO KOZULIC"  
MEDICAL CENTER MALI LOSINJ***

**COMPLETE X-RAY SYSTEM**

